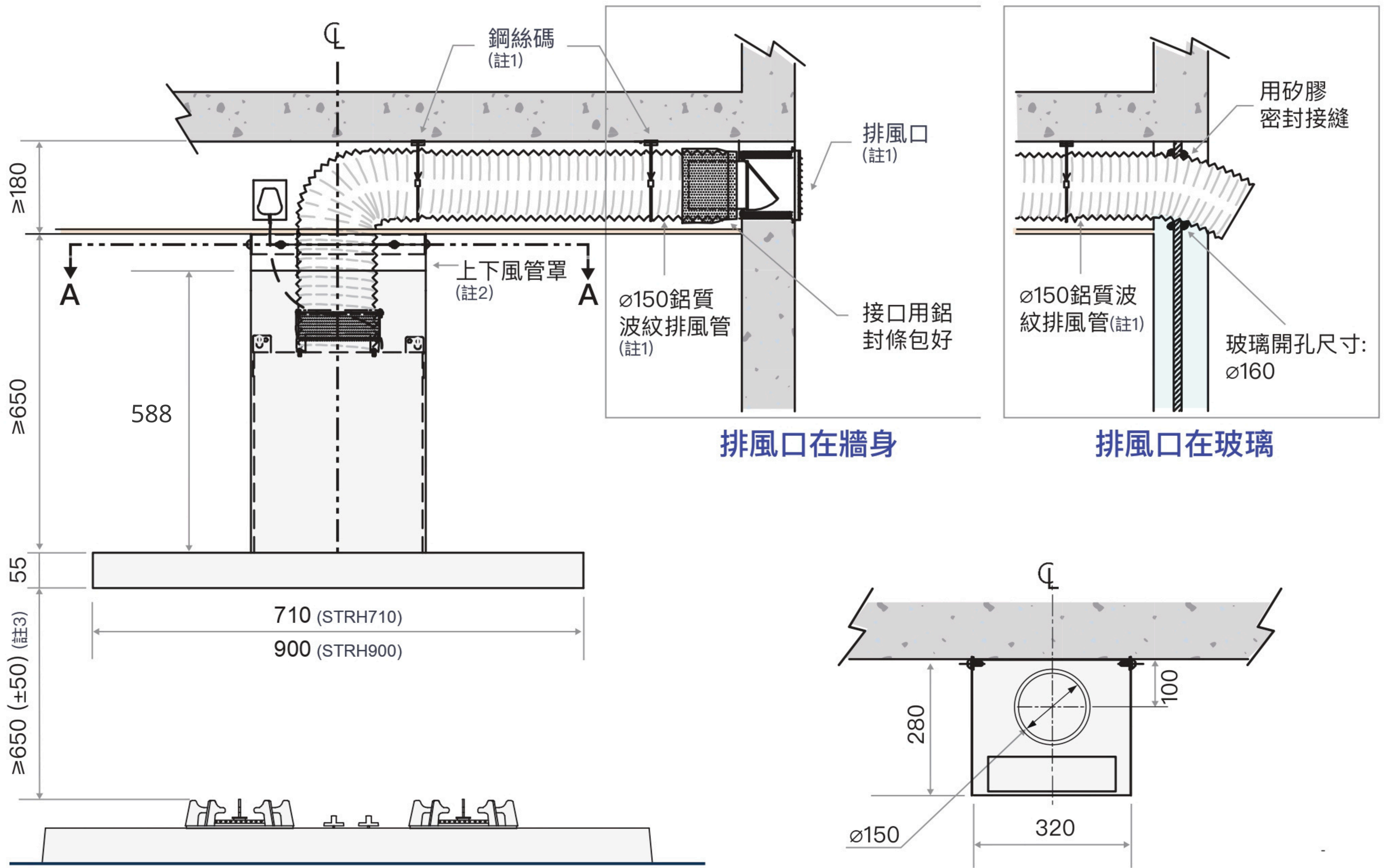
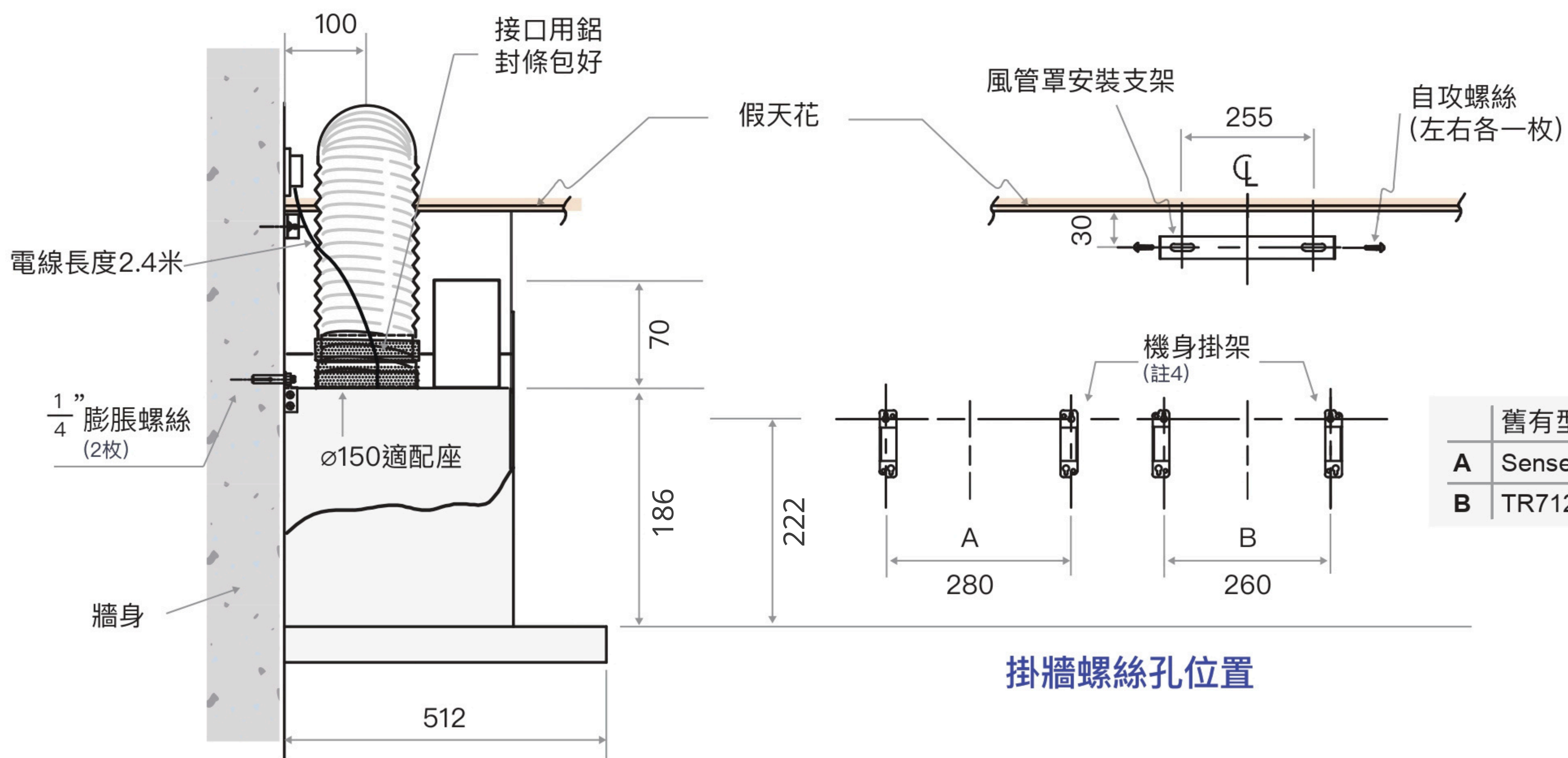


### STRH710/900 掛牆式安裝



正視圖

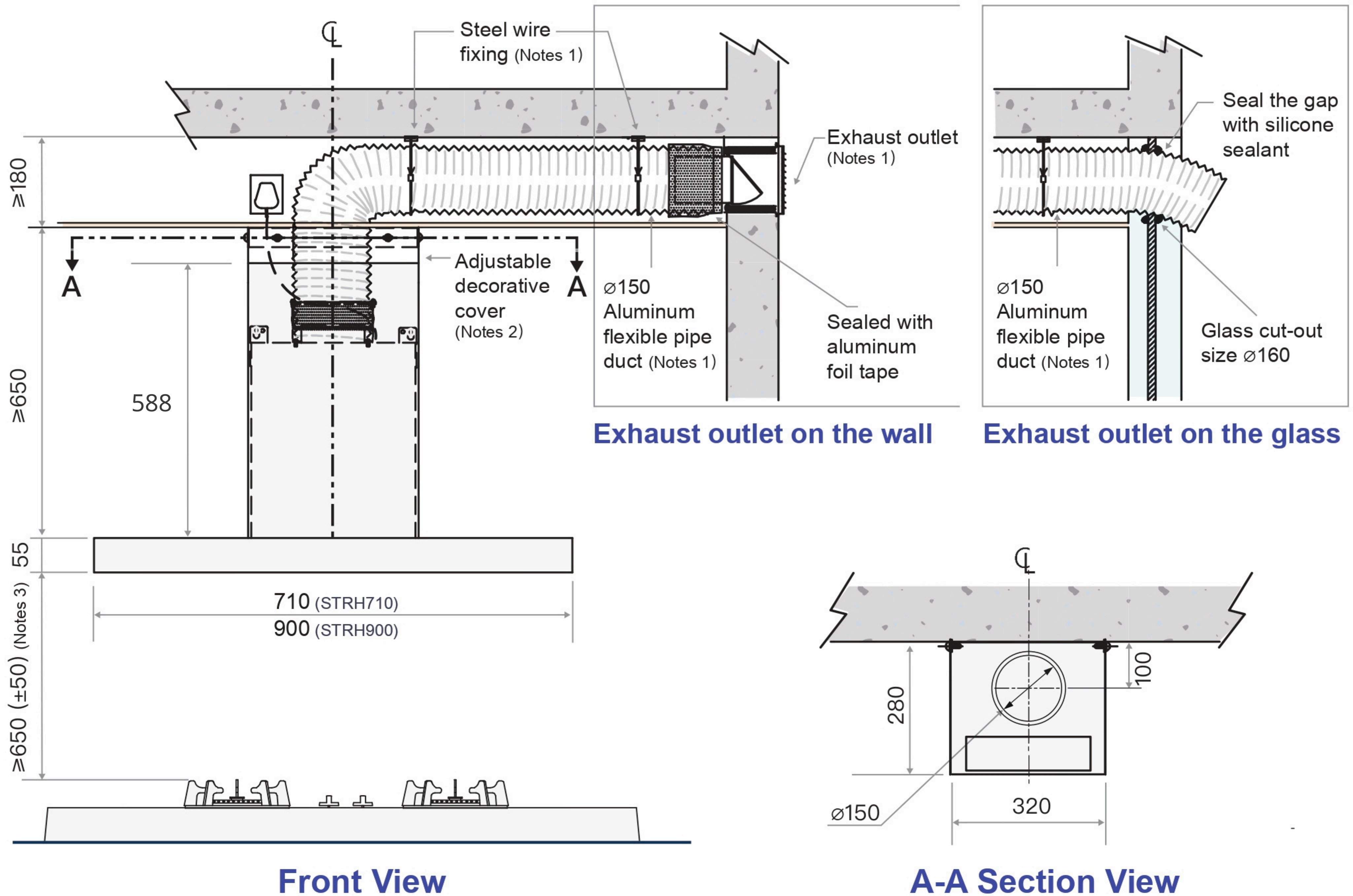
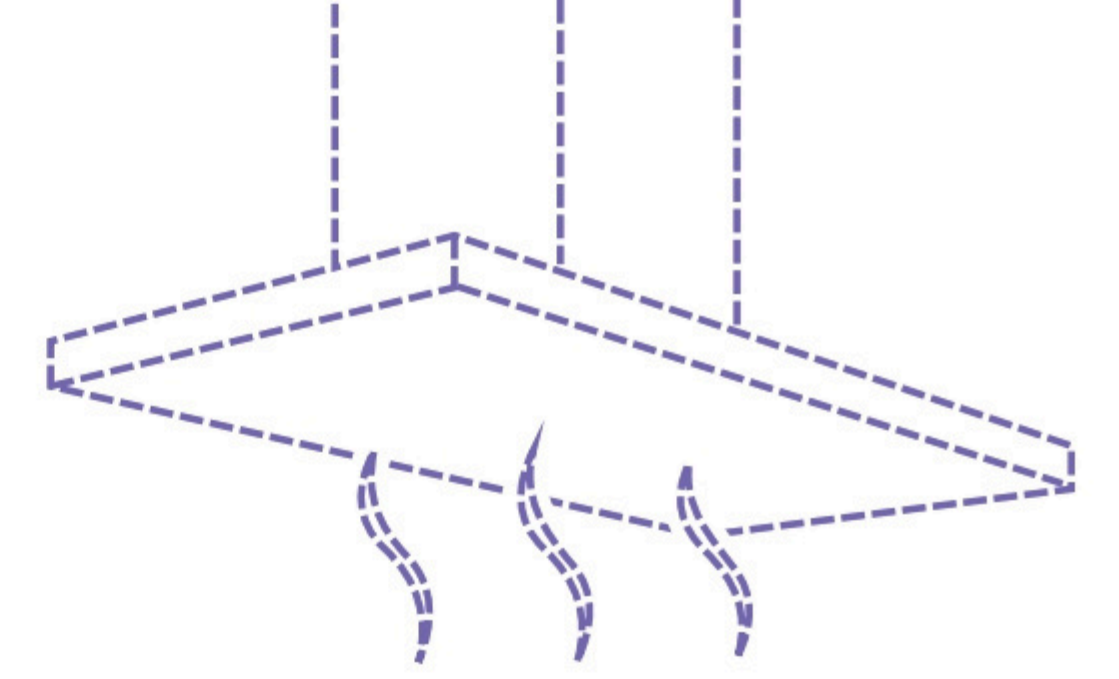
A-A 剖視圖



舊有型號	
A	Senses+ / Excel+ / STRH
B	TR712

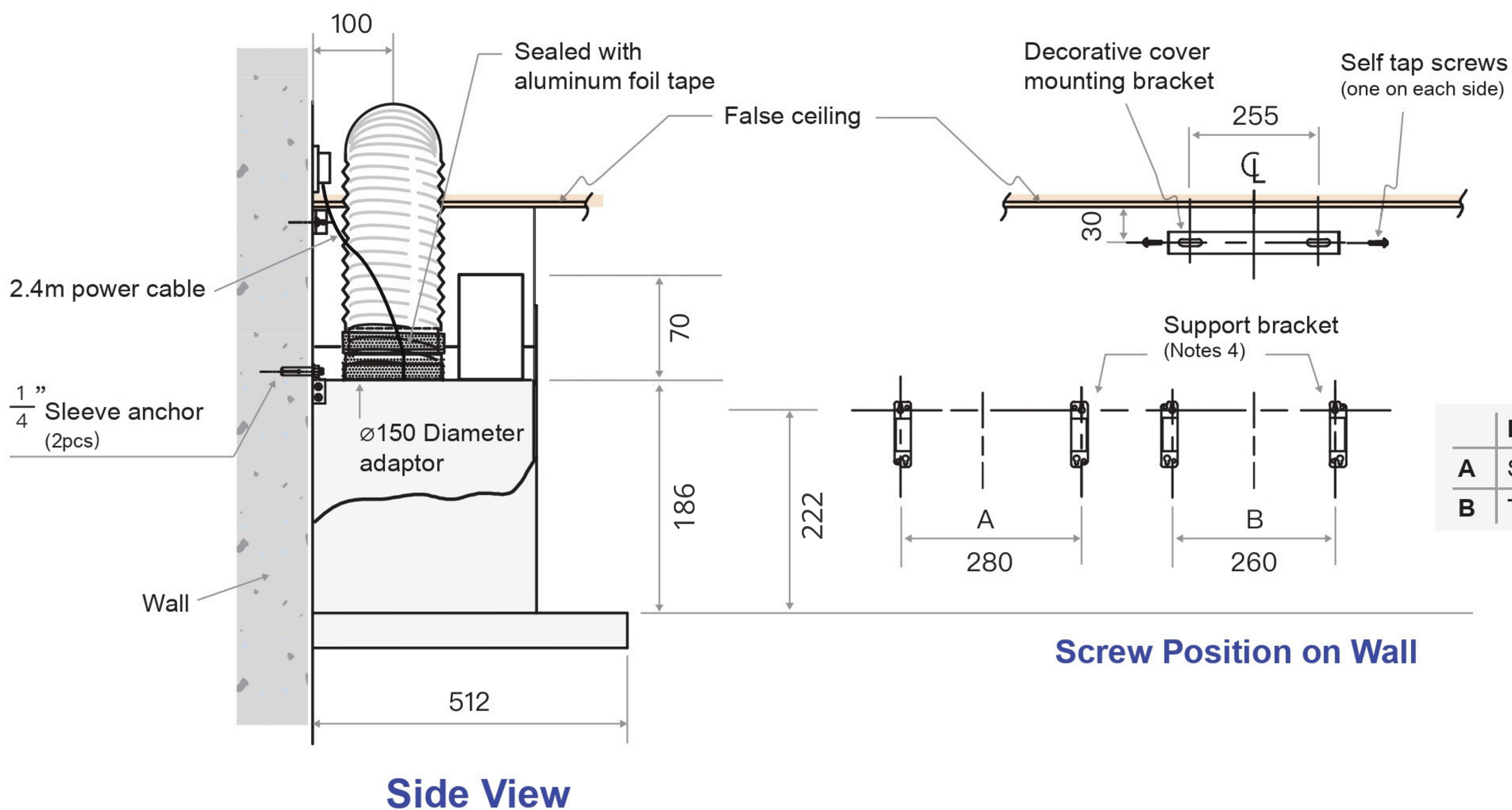
- 註：
- 由承建商提供及安裝，需另收費  
鋼絲碼距離不可超過1500毫米
  - 上下風管罩可調高度範圍：588至1122毫米
  - 抽油煙機底與煮食爐架距離必須至少為650毫米（可接受±50毫米差距）
  - 機身掛架及防掀翻擋板固定在牆身上，以承托機身重量

## STRH710/900 Free-standing Installation



**Front View**

**A-A Section View**



**Side View**

**Screw Position on Wall**

	Existing Model
A	Senses+ / Excel+ / STRH
B	TR712

- Notes :**
1. Provided and installed by contractor with additional charge  
The distance between steel wire fixing cannot exceed 1500mm
  2. Adjustable height of pipe cover: 588-1122mm
  3. The distance between the pan support of cooking range and the lowest part of range hood should be at least 650mm (with ±50mm tolerance)
  4. Support bracket and baffles should be mounted on the wall to support the weight of the appliance